

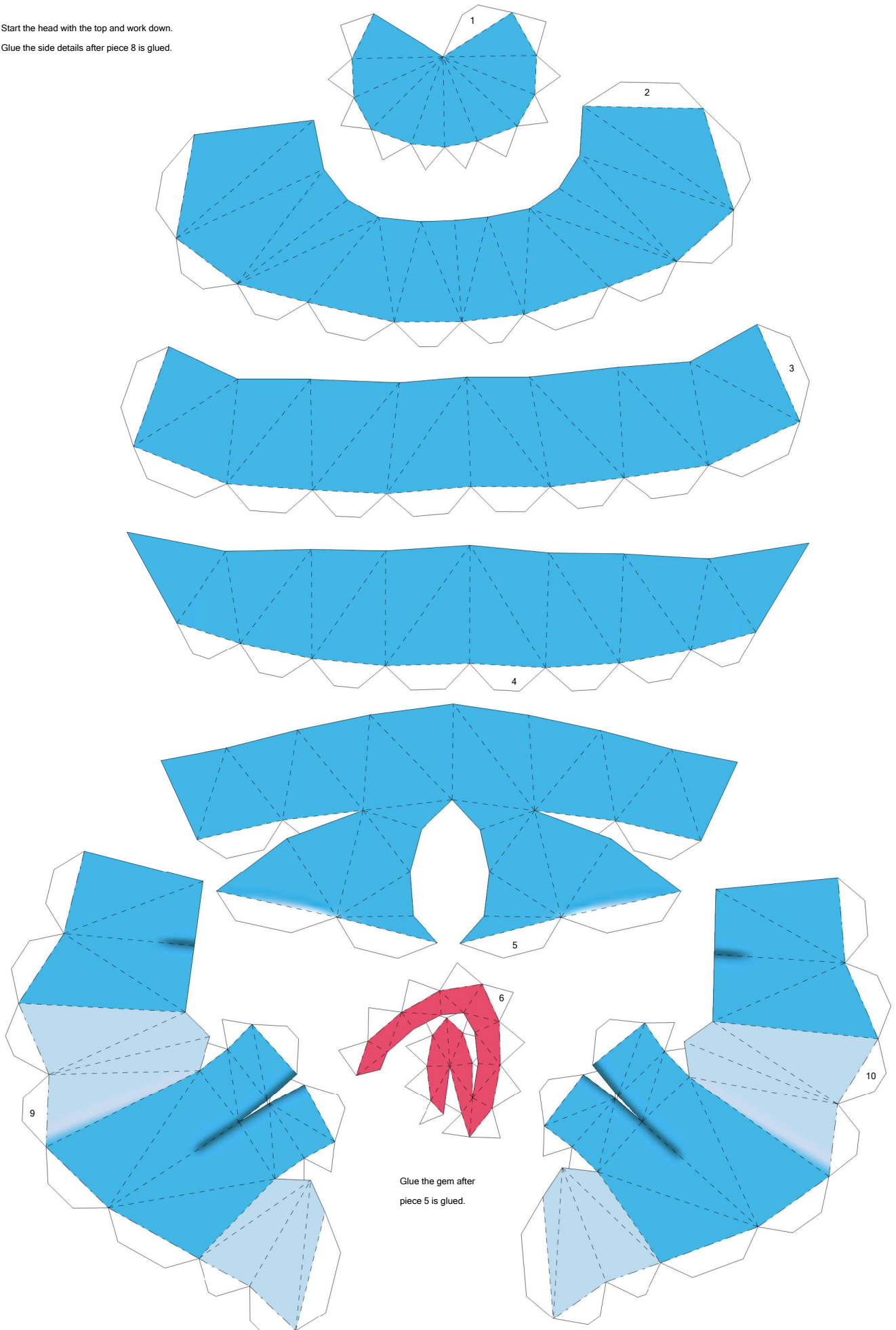


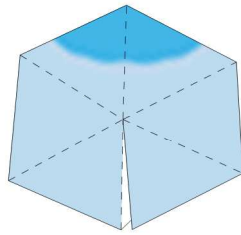
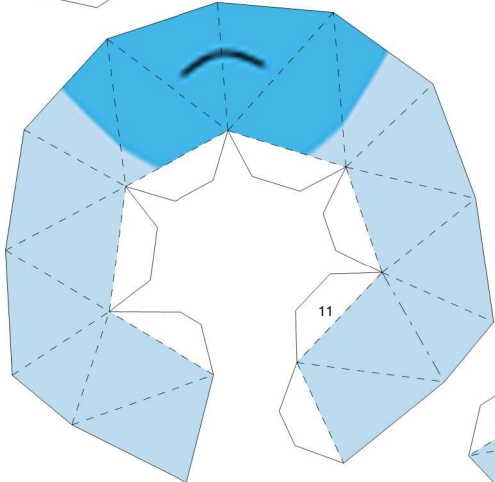
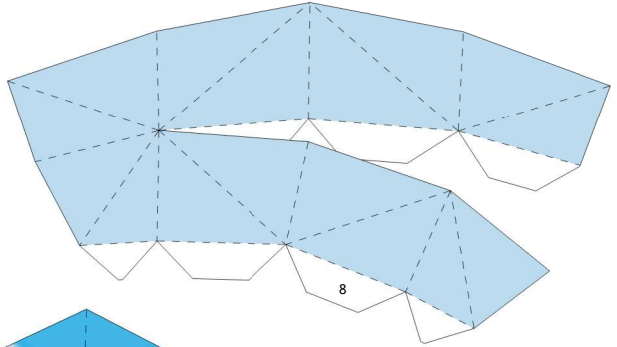
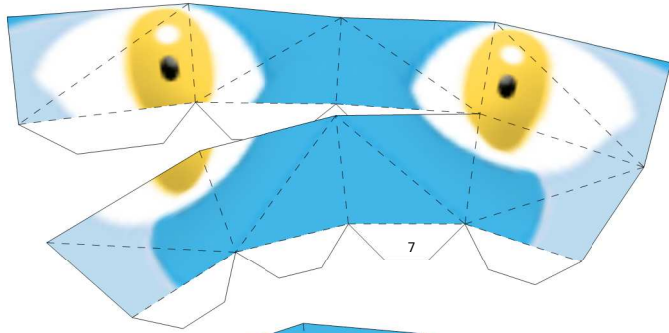
Azelf

By Luis

PAPERPOKÉS
www.pokemonpapercraft.net

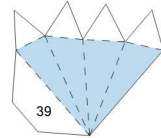
Start the head with the top and work down.
Glue the side details after piece 8 is glued.



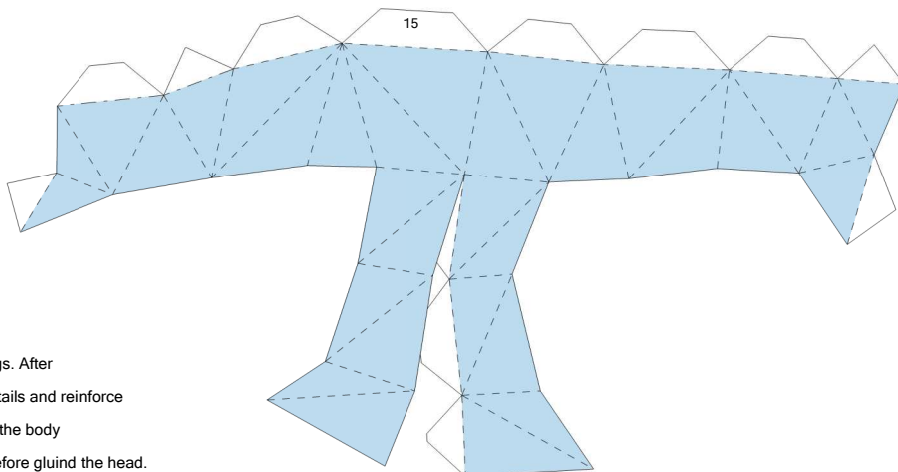
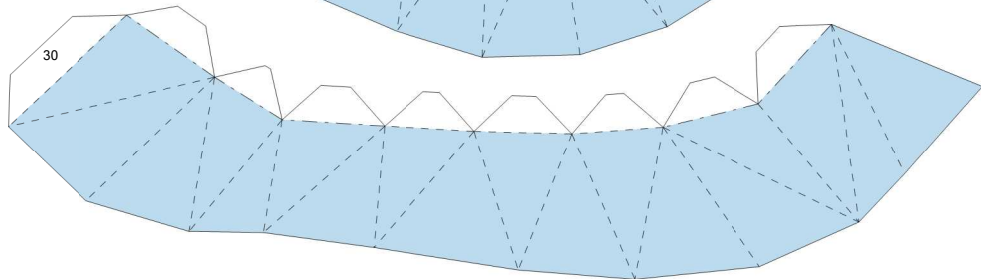
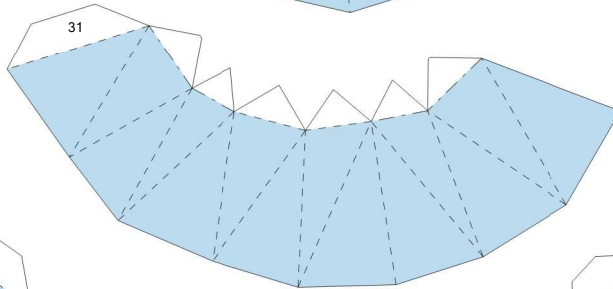
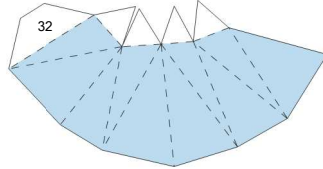


12

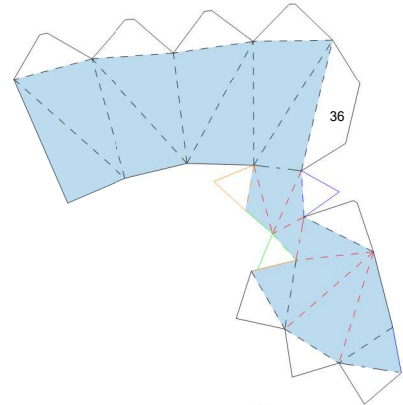
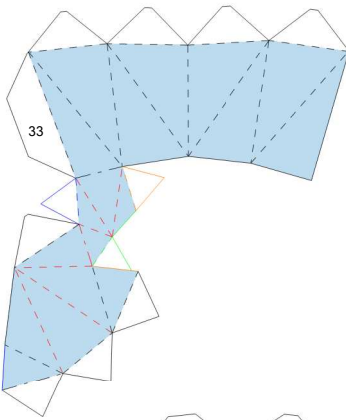
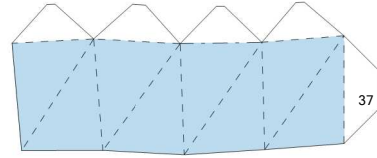
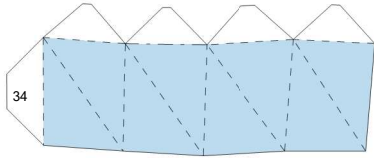
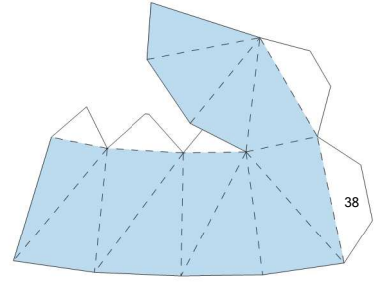
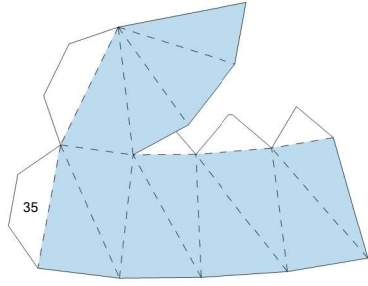
Close the head with piece 12.



Glue piece 39 to the head before gluing it to the body. After it's place on the head, just pop it in the body with a small amount of glue.

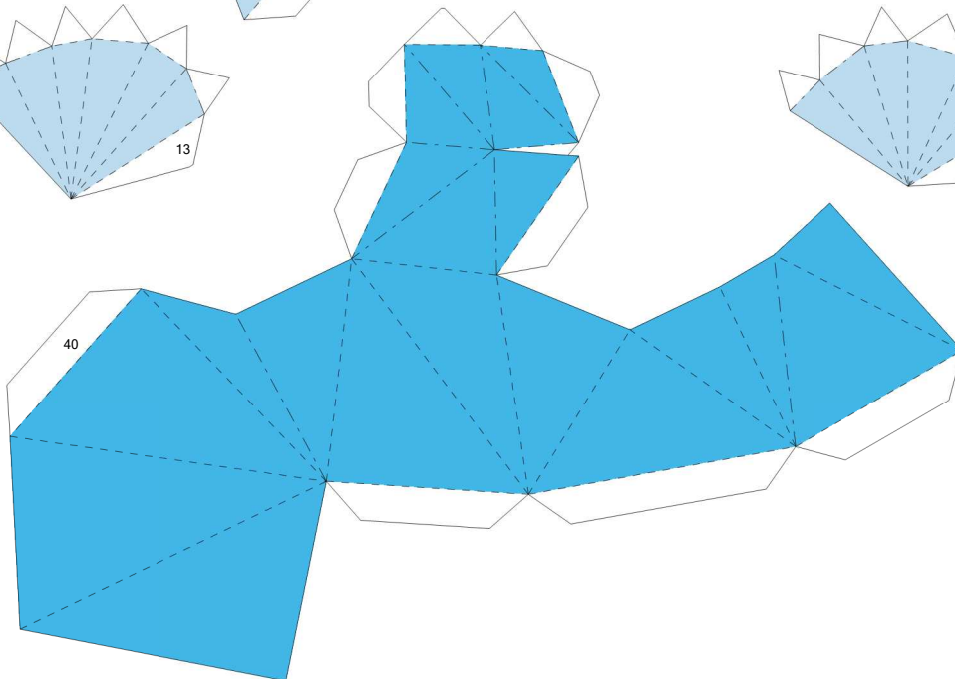
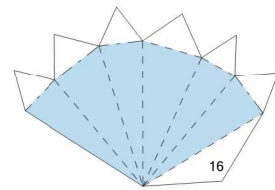
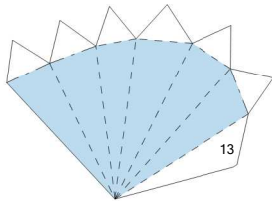
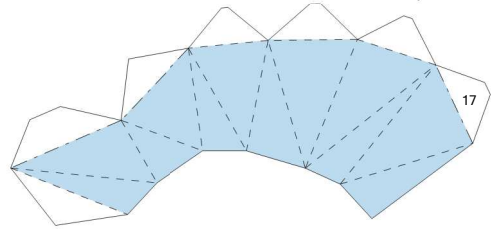
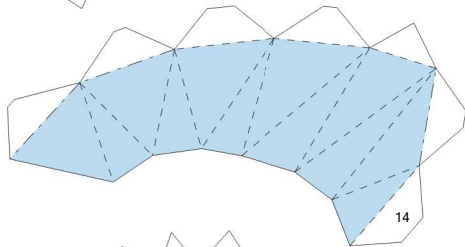


Start the body with the legs. After they are placed, glue the tails and reinforce the connection. Continue the body and glue the arms on it before gluing the head.



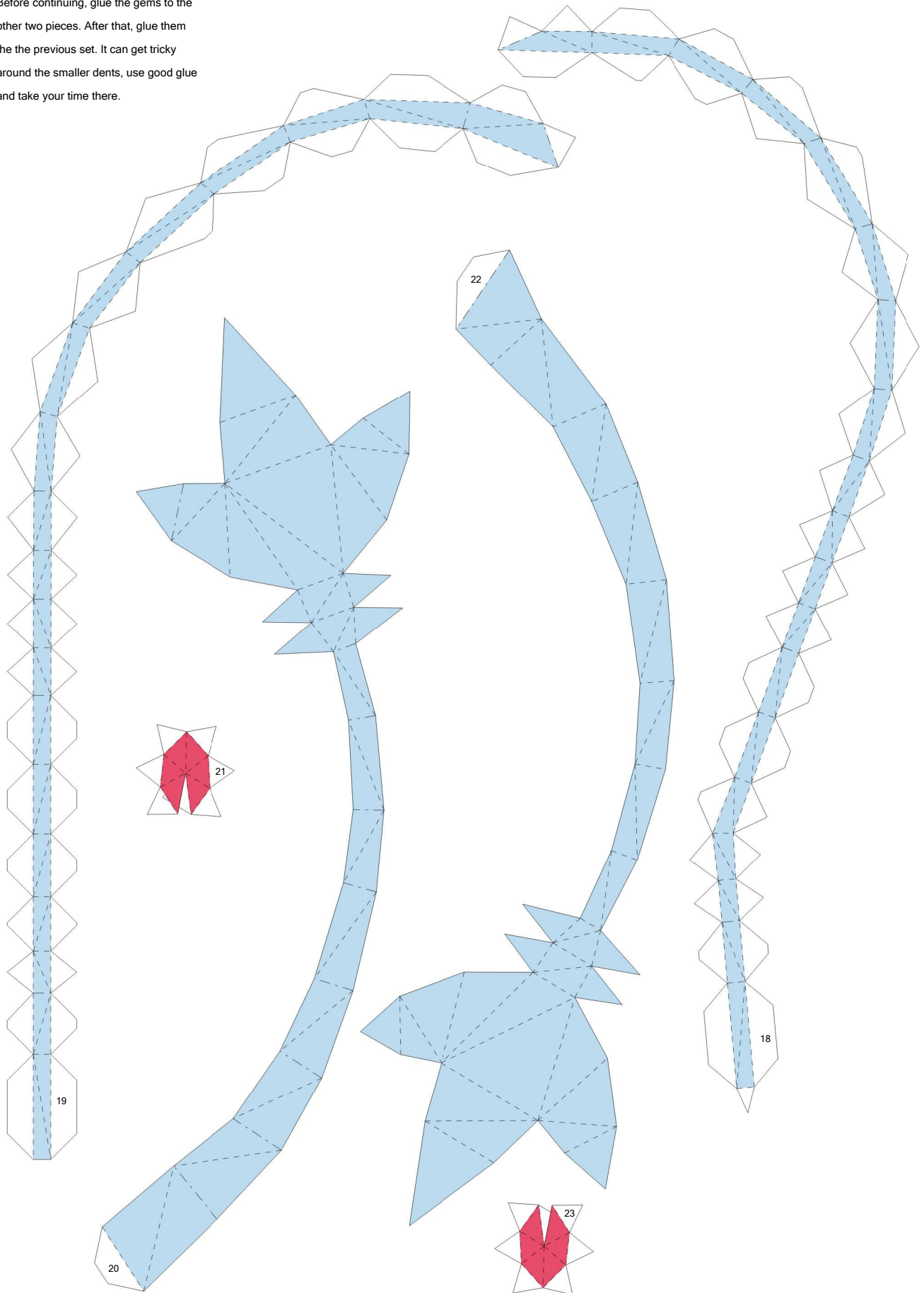
Start the arms at the fingers and close them at the top. Glue them to the body before joining the head.

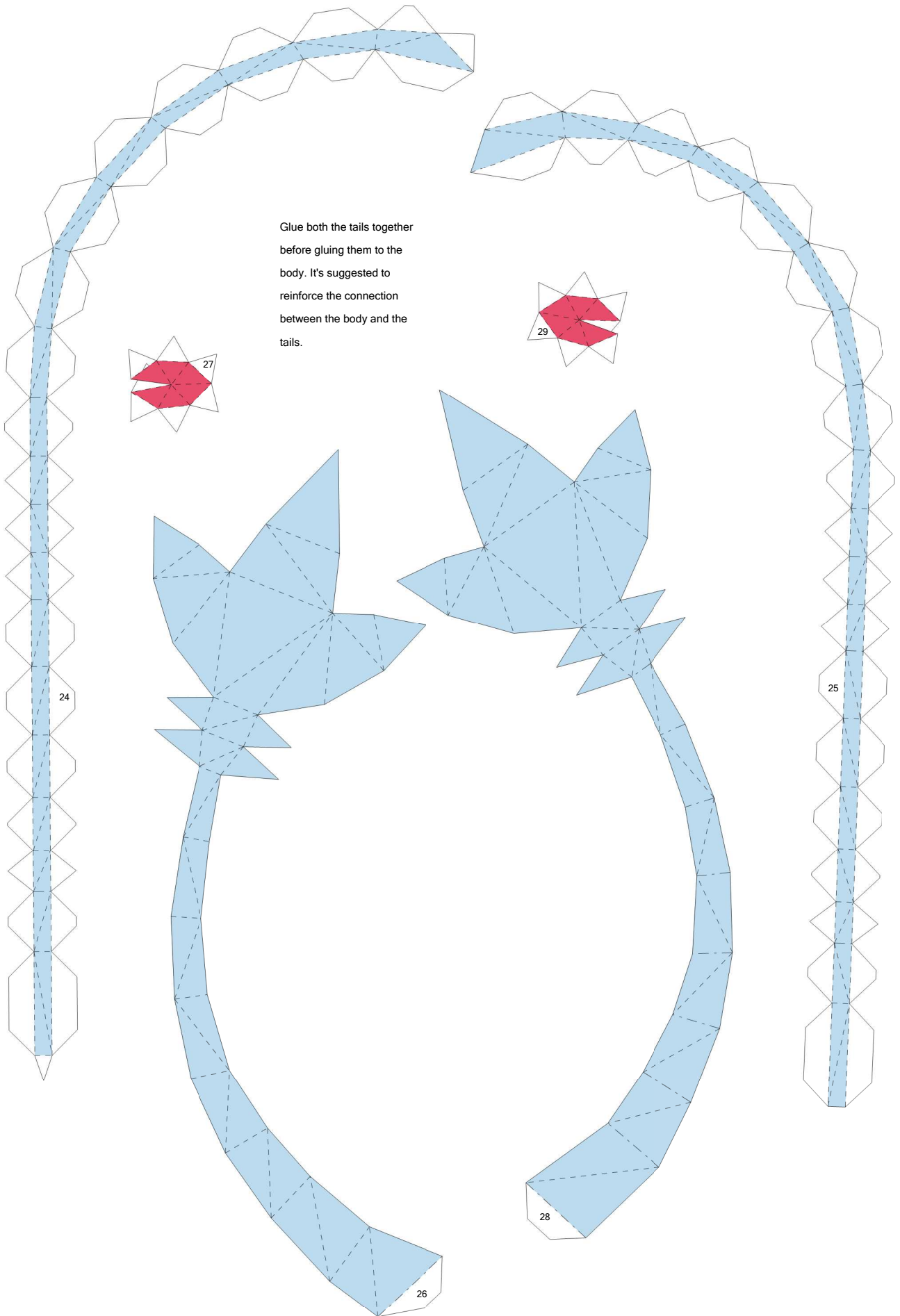
Follow the colored references on the fingers.



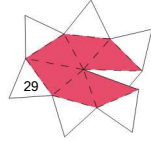
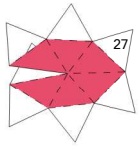
Close the base at the bottom.

The tail is the hardest part of the model.
First, glue the first two pieces together.
Before continuing, glue the gems to the
other two pieces. After that, glue them
to the previous set. It can get tricky
around the smaller dents, use good glue
and take your time there.





Glue both the tails together before gluing them to the body. It's suggested to reinforce the connection between the body and the tails.



24

25

26

28

29